



Commercial and Architecture  
Lighting designer and  
Manufacturer

2020-2021

PRODUCTS CATALOG

**DongGuan Emilux Lighting Technology Ltd**

Add:A-2F,XinYongShen technology park,ShiLong Town,  
DongGuan City,GuangDong Province,china

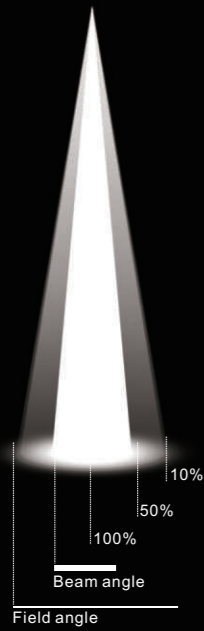
E-mail:sales@emiluxled.com

Http://www.emiluxled.com

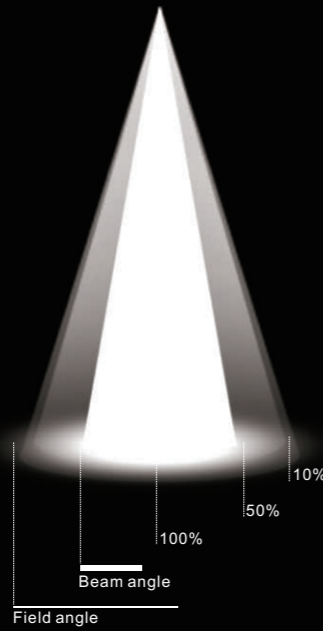


### Industry standard

Spot



Medium



### Breaking a standard

The lighting industry's standard defines that the beam angle is the angle which contains 50% of the luminous intensity of the light beam. The field angle ends when the luminous intensity reaches 10% of its maximum. One concentrates in its beam angle 90% of the maximum luminous intensity; consequently, the difference between the beam angle and the field angle is practically nonexistent. The result is a defined beam with no light spill. These characteristics will allow you to design the light with maximum accuracy.

### Lightcore

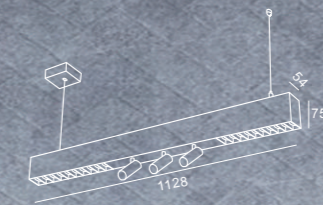
Medium





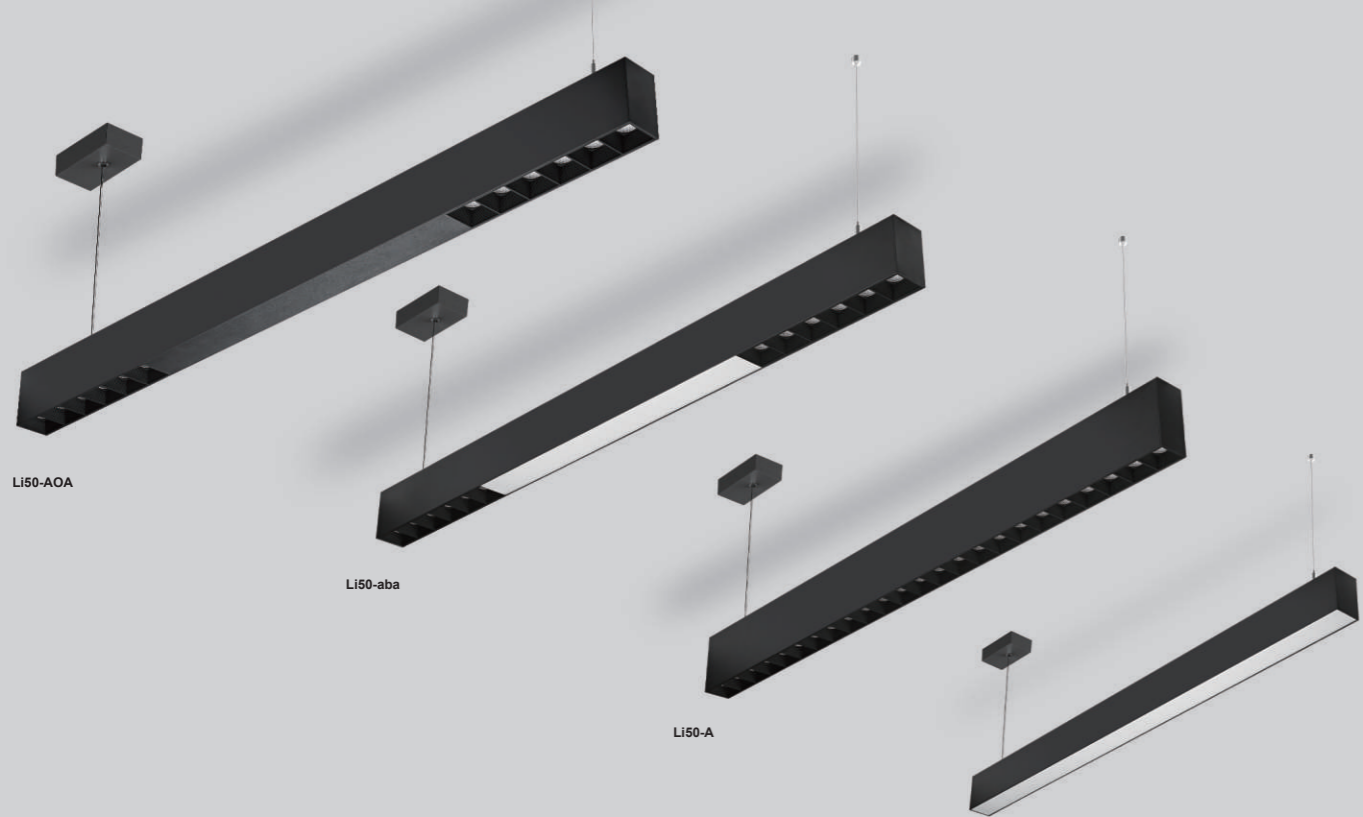
**Li-20066**

Wattage: 40W(2x18W+3x3W)





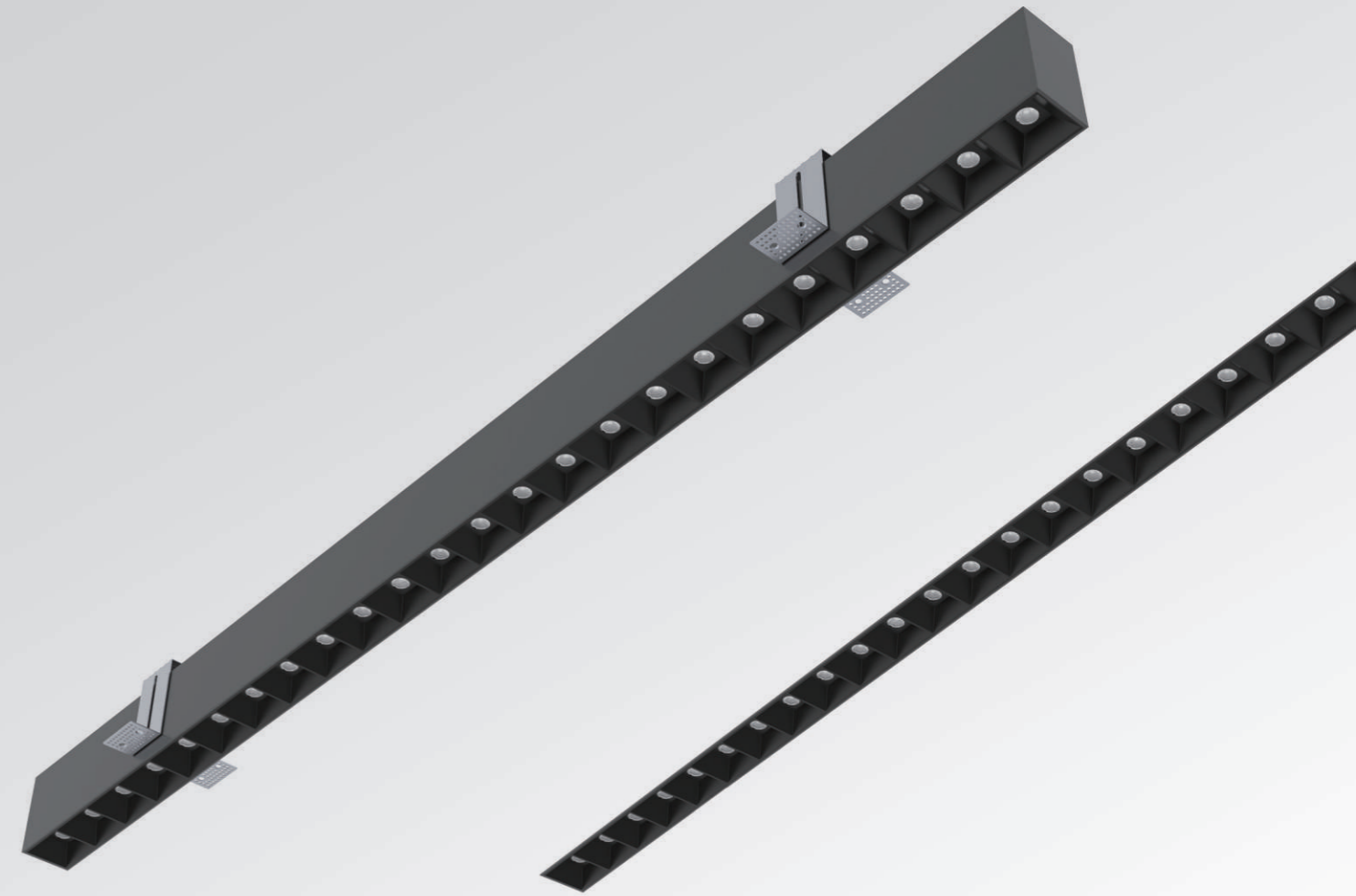
Li50-AOA



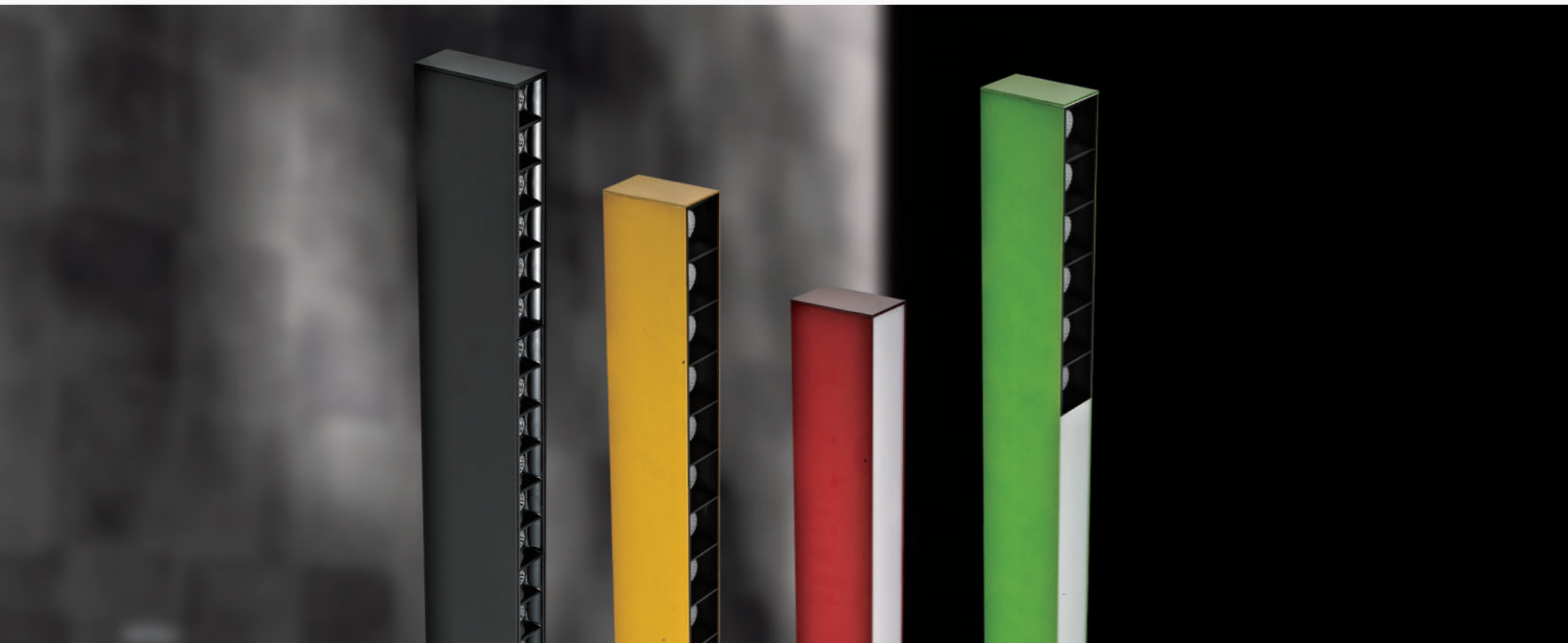
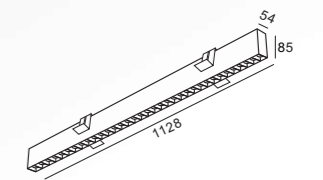
Li50-aba

Li50-A

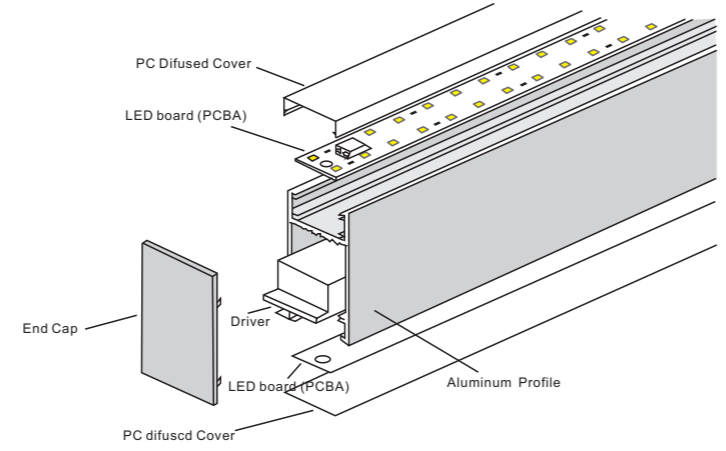
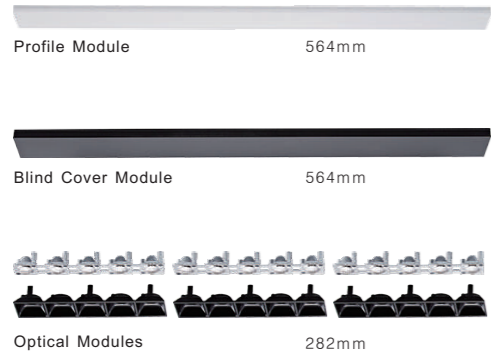
Li50



**Li50-A-R**  
Wattage:40W(24x2W)

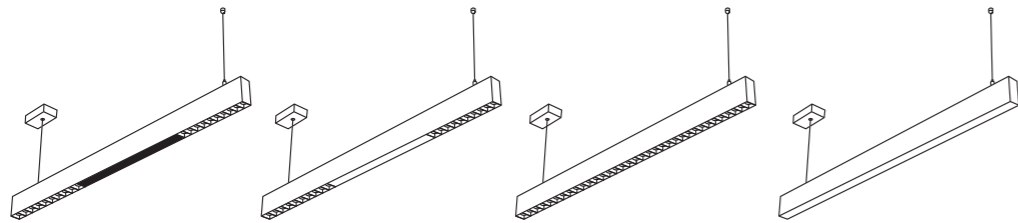


模组



UP & Down Linear

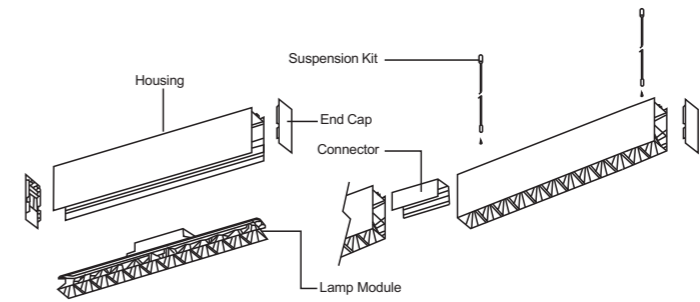
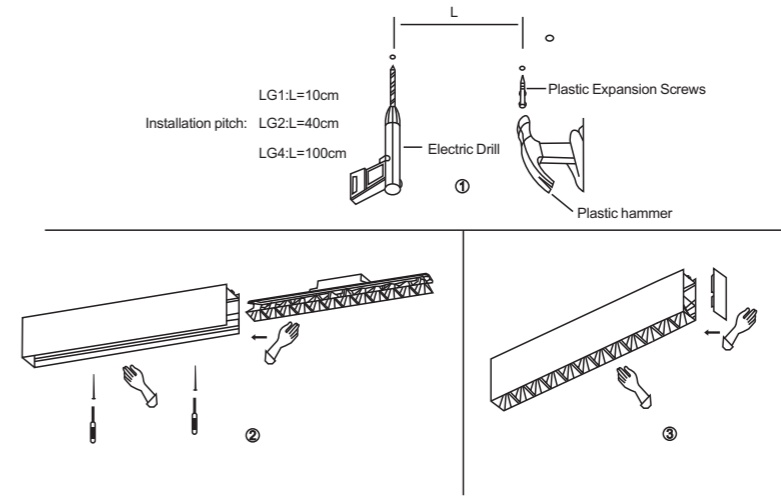
Outline Drawing : (mm)



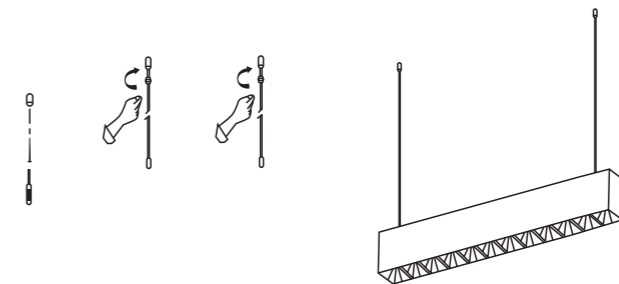
Model	Voltage	Dimmable driver	Power (W)	CCT	CRI	LUMEN	SPEC (mm)
Li50-AOA	AC100~240V	0~10V	45W	3000~5000K	>80	80LM/W	1128x54x75
Li50-ABA	AC100~240V	0~10V	45W	3000~5000K	>80	80LM/W	1128x54x75
GL-20063	AC100~240V	0~10V	45W	3000~5000K	>80	80LM/W	1128x54x75
Li50-A	AC100~240V	0~10V	45W	3000~5000K	>80	80LM/W	1128x54x75
Li50	AC100~240V	0~10V	45W	3000~5000K	>80	80LM/W	1128x54x75
GL-20066	AC100~240V	0~10V	45W	3000~5000K	>80	80LM/W	1128x54x75

Installation Instructions Drawing:

Exploded view

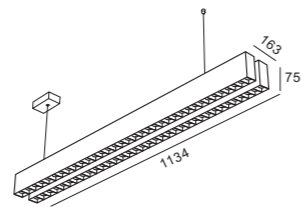


A.Suspension

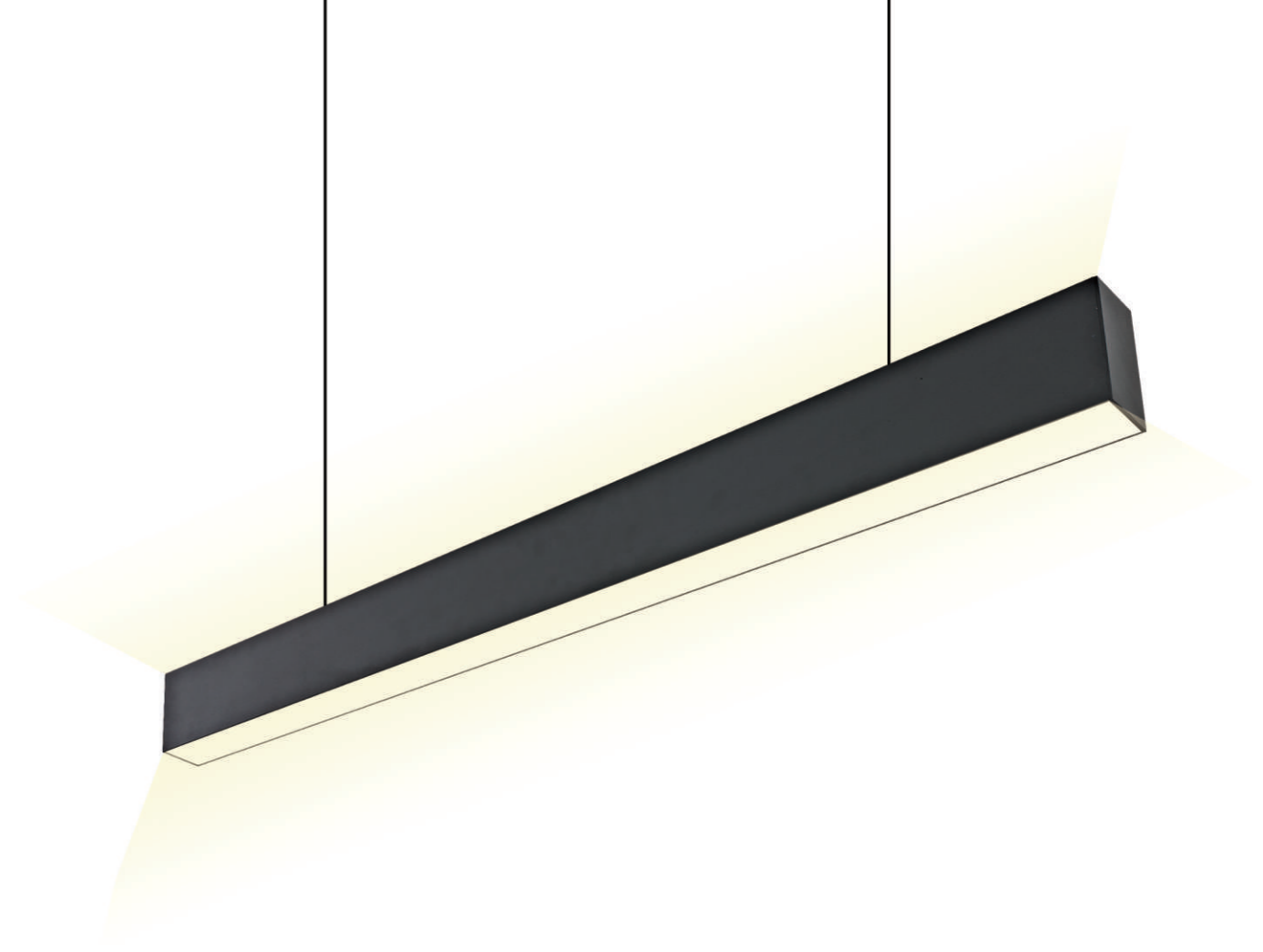
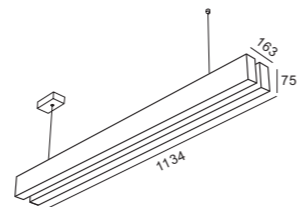




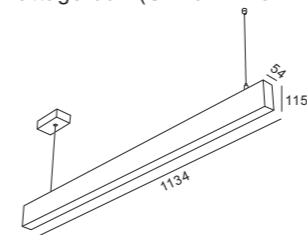
**Li50-Ax2**  
Wattage:80W



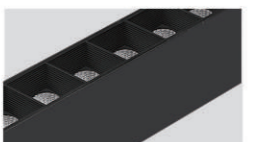
**Li50-X2**  
Wattage:80W



**Li50-UD**  
Wattage:60W(UP20W+DOWN40W)



DOWN

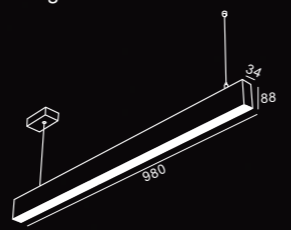


UP

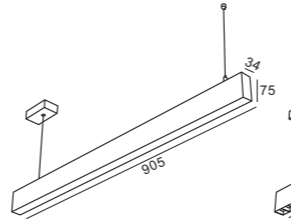




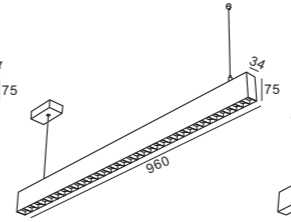
**Li30-HC**  
Wattage:36W



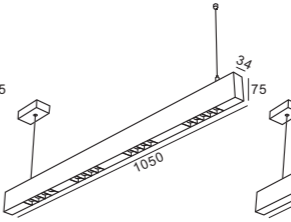
**Li30**  
Wattage:36W



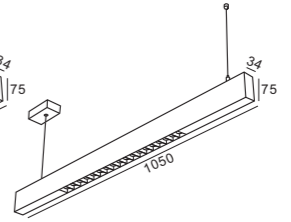
**Li30-A**  
Wattage:36W



**Li30-AOA**  
Wattage:36W



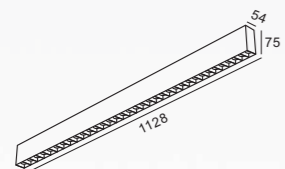
**Li30-OAO**  
Wattage:36W



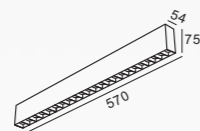


**Sufare Mounted**

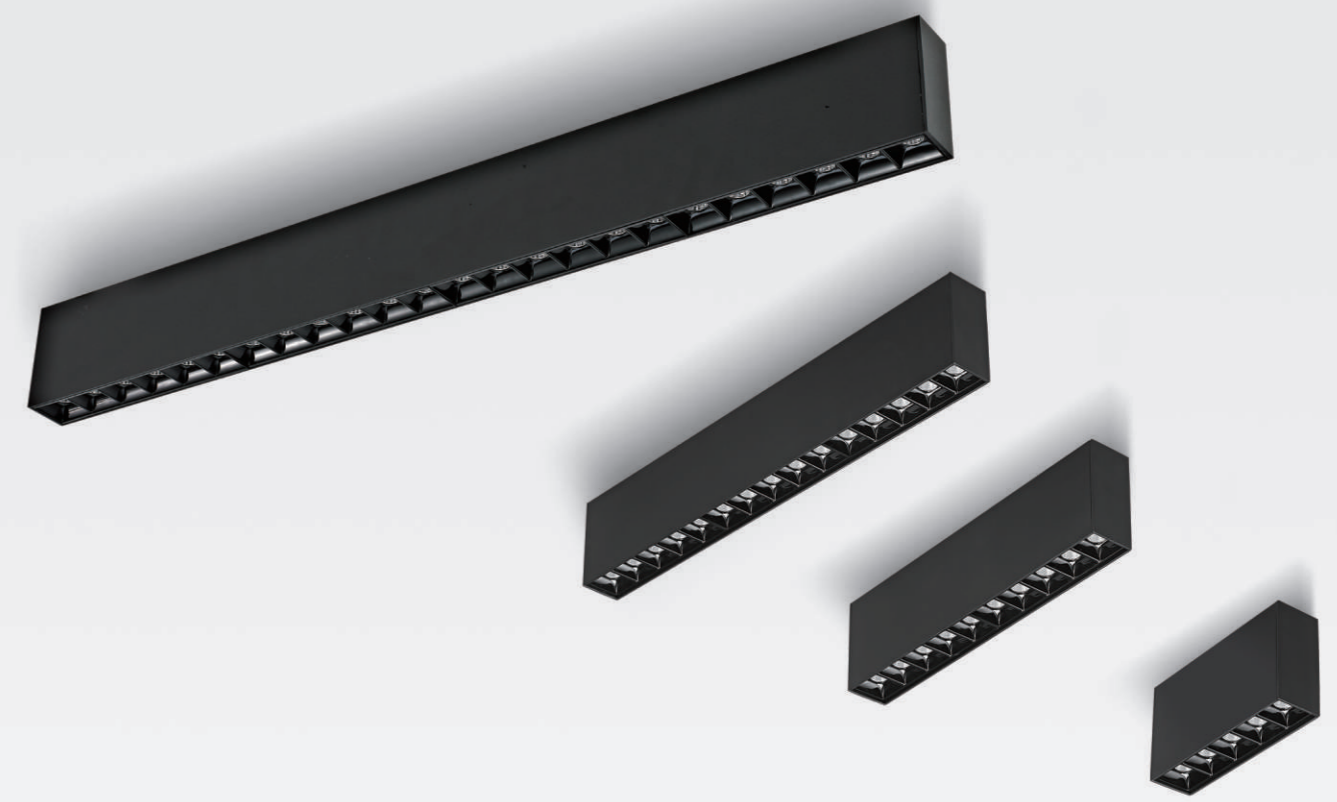
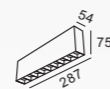
**Li-50A-M**  
Wattage:40W



**Li-50A-M12**  
Wattage:20W

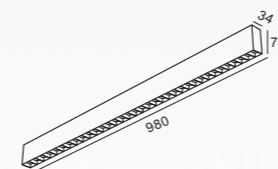


**Li-50A-M6**  
Wattage:16W

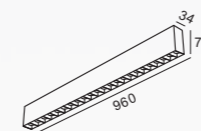


**Sufare Mounted**

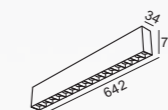
**Li-30A-M**  
Wattage:36W



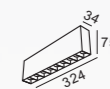
**Li-30A-M20**  
Wattage:30W

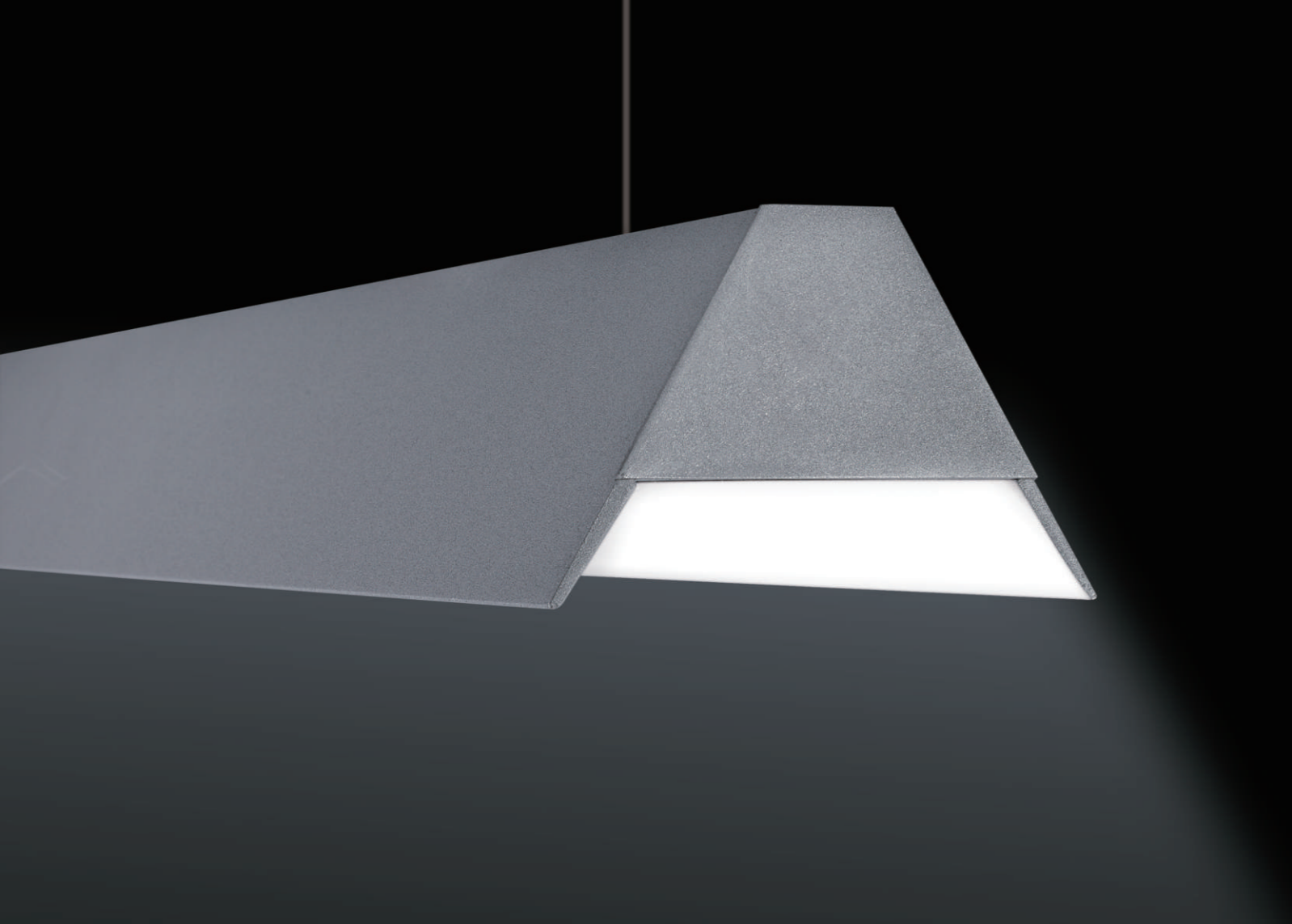


**Li-30A-M10**  
Wattage16W

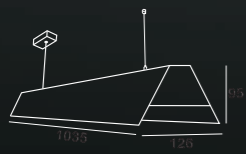


**Li-30A-M6**  
Wattage 1 0W

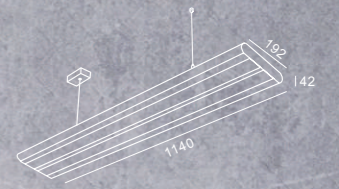


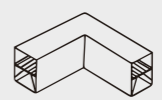
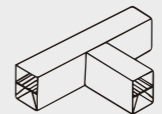
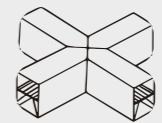
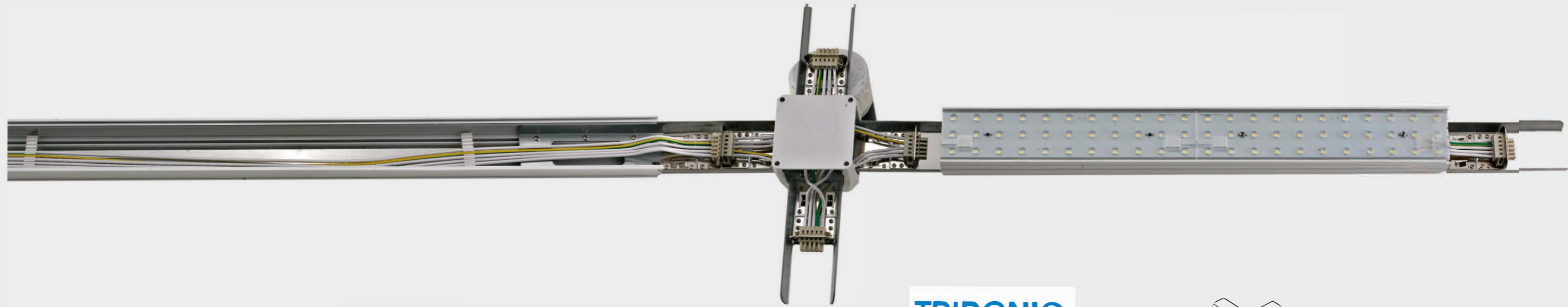


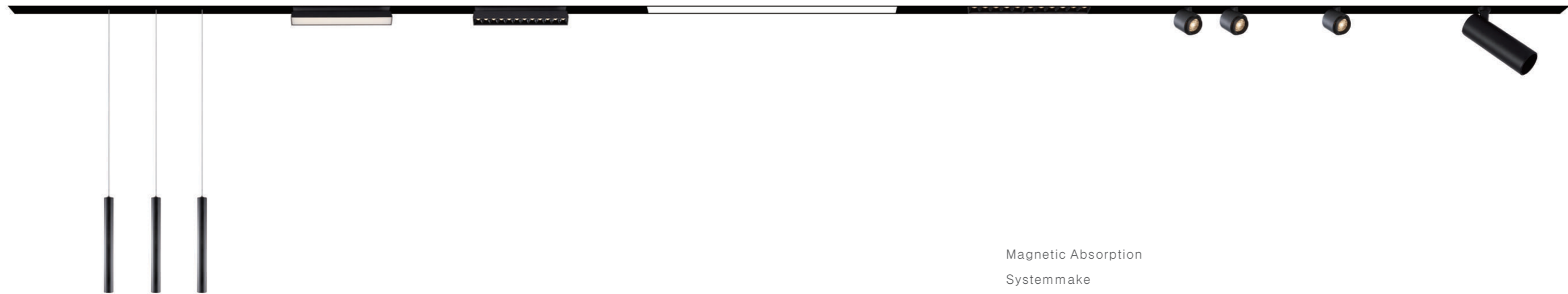
**LI-20088**  
Wattage: 45W



**LI-20078**  
Wattage: 60W



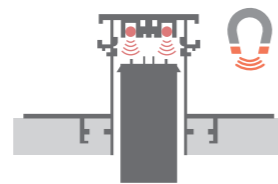




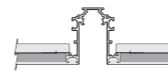
Magnetic Absorption  
Systemmake  
Installation More Convenient



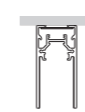
**24V Magnetic Track System**  
ON/OFF DALI Dimming



Installation methods



Recessed



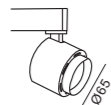
Surface Mounted



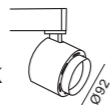
Pendant



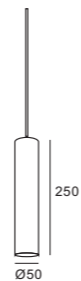
**GL-M65S**  
Wattage:8W  
CCT:2700K~6500K



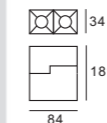
**GL-M65B**  
Wattage:16W  
CCT:2700K~6500K



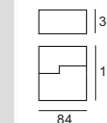
**GL-M01P**  
Wattage:10W  
CCT:2700K~6500K



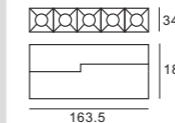
**Fold03**  
Wattage:4W  
CCT:2700K~6500K



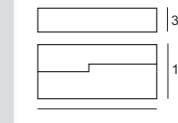
**Fold08**  
Wattage:4W  
CCT:2700K~6500K



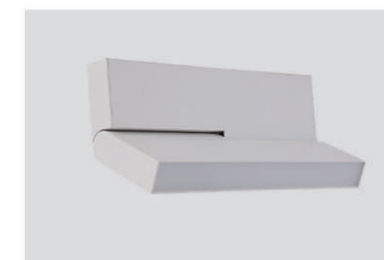
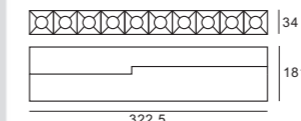
**Fold06**  
Wattage:8W  
CCT:2700K~6500K



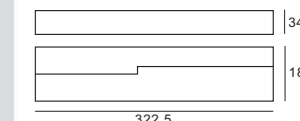
**Fold16**  
Wattage:8W  
CCT:2700K~6500K



**Fold12**  
Wattage:16W  
CCT:2700K~6500K



**Fold32**  
Wattage:16W  
CCT:2700K~6500K

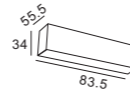




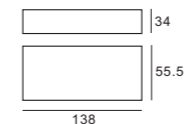
**Dot01**  
Wattage:1W  
CCT:2700K~6500K



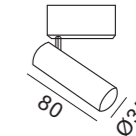
**Linear08**  
Wattage:4W  
CCT:2700K~6500K



**GL-W13A**  
Wattage:8W  
CCT:2700K~6500K



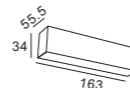
**GL-M35**  
Wattage:5W  
CCT:2700K~6500K



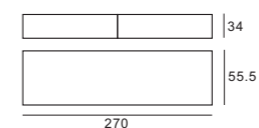
**Dot03**  
Wattage:4W  
CCT:2700K~6500K



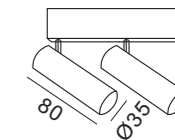
**Linear16**  
Wattage:7W  
CCT:2700K~6500K



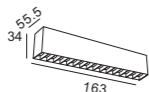
**GL-W27A**  
Wattage:16W  
CCT:2700K~6500K



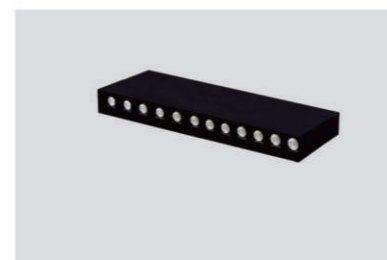
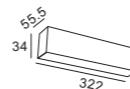
**GL-M35D**  
Wattage:2x5W  
CCT:2700K~6500K  
Size:Ø35x80mm



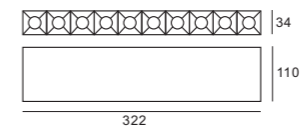
**Dot06**  
Wattage:8W  
CCT:2700K~6500K



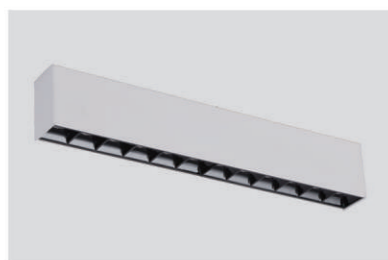
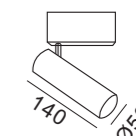
**Linear32**  
Wattage:13W  
CCT:2700K~6500K



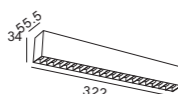
**GL-012**  
Wattage:16W  
CCT:2700K~6500K



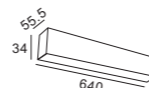
**Spot50**  
Wattage:10W  
CCT:2700K~6500K



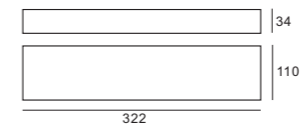
**Dot12**  
Wattage:16W  
CCT:2700K~6500K



**Linear64**  
Wattage:26W  
CCT:2700K~6500K



**GL-032**  
Wattage:13W  
CCT:2700K~6500K



**GL-M5050**  
Wattage:10W  
CCT:2700K~6500K  
Size:

